



# TAI-SAW TECHNOLOGY CO., LTD.

No. 3, Industrial 2nd Rd., Ping-Chen Industrial District,  
Taoyuan, 324, Taiwan, R.O.C.

TEL: 886-3-4690038 FAX: 886-3-4697532

E-mail: [tstsales@mail.taisaw.com](mailto:tstsales@mail.taisaw.com) Web: [www.taisaw.com](http://www.taisaw.com)

## Product Specifications Approval Sheet

Product Description: SAW Filter 403.5 MHz SMD 1.4X1.1 mm (BW=5 MHz)

TST Part No.: TA1775B

Customer Part No.: \_\_\_\_\_

Customer signature required
Company: _____
Division: _____
Approved by : _____
Date: _____

Checked by: \_\_\_\_\_ Hayley Chou *Hayley Chou*

Approved by: \_\_\_\_\_ Andy Yu *Andy Yu*

Date: \_\_\_\_\_ 2018/12/13

1. Customer signed back is required before TST can proceed with sample build and receive orders.
2. Orders received without customer signed back will be regarded as agreement on the specifications.
3. Any specifications changes must be approved upon by both parties and a new revision of specifications shall be released to reflect the changes.



# TAI-SAW TECHNOLOGY CO., LTD.

No. 3, Industrial 2nd Rd., Ping-Chen Industrial District,  
Taoyuan, 324, Taiwan, R.O.C.

TEL: 886-3-4690038 FAX: 886-3-4697532

E-mail: [tstsales@mail.taisaw.com](mailto:tstsales@mail.taisaw.com) Web: [www.taisaw.com](http://www.taisaw.com)

## SAW Filter 403.5 MHz

MODEL NO.:TA1775B

REV. NO.:1.0

### A. MAXIMUM RATING:

1. Maximum Input Power: 15 dBm
2. Maximum DC Voltage: 3 V
3. Operating Temperature: -30 °C to +70 °C
4. Storage Temperature: -40 °C to +85 °C
5. Moisture Sensitivity Level: Level 3 (MSL 3)

RoHS Compliant  
Lead free  
Lead-free soldering

Electrostatic Sensitive Device (ESD)

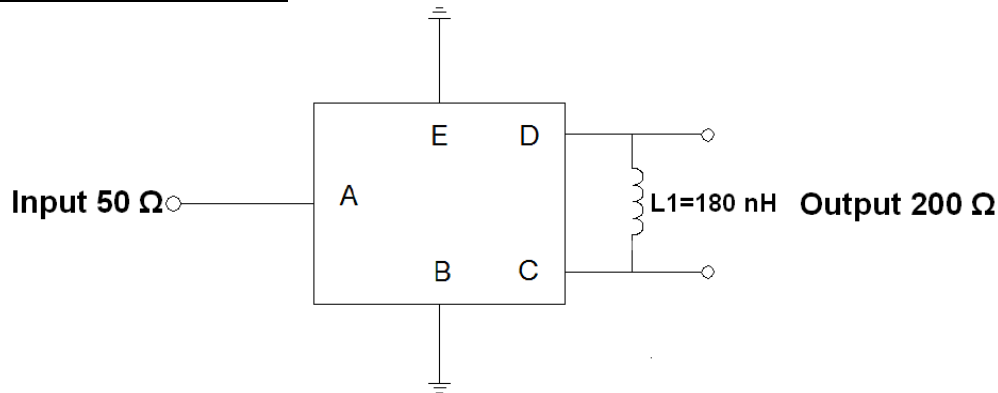
### B. ELECTRICAL CHARACTERISTICS:

Terminating source impedance:  $Z_s = 50 \Omega$  (Single-ended)

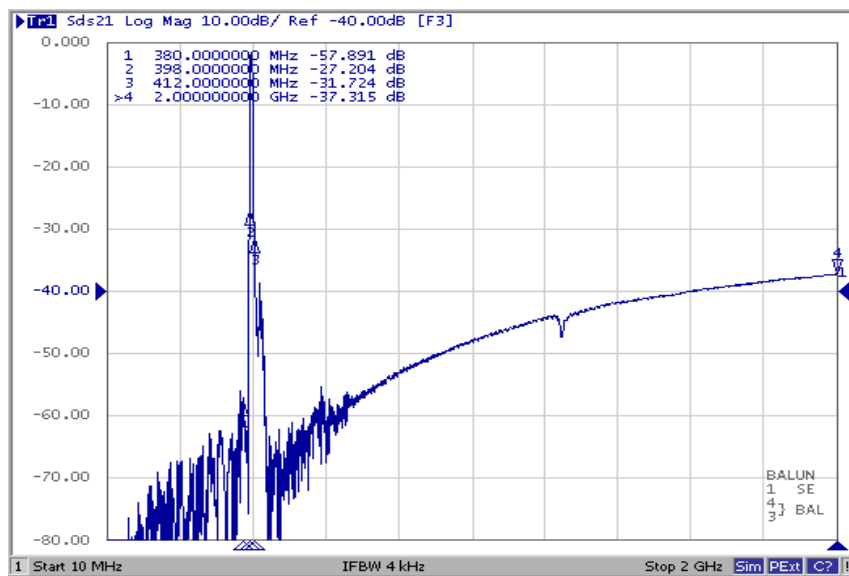
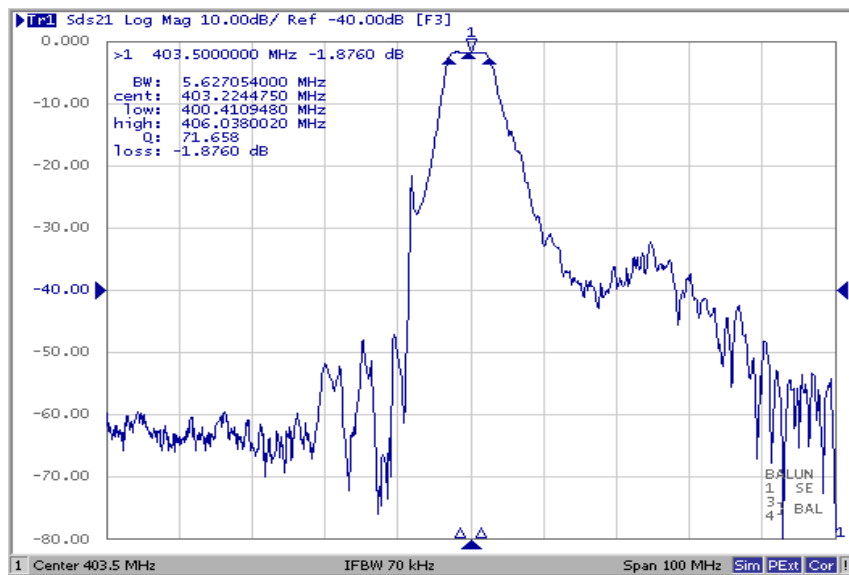
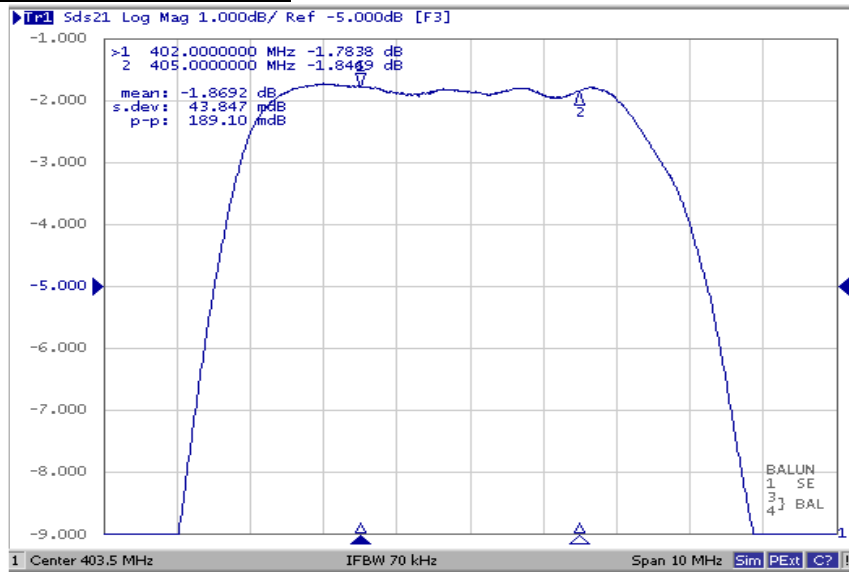
Terminating load impedance:  $Z_L = 200 \Omega$  (Balanced)

Parameters Description	Unit	Min.	Typ.	Max.	
Center Frequency	Fc	MHz	-	403.5	-
-1.5 dB Band Width	BW	MHz	3.0	5.0	-
Insertion Loss (402~405 MHz)	IL	dB	-	2.4	3.0
Amplitude Ripple (402~405 MHz)		dB	-	0.2	1.4
VSWR (402~405 MHz)		-	-	1.7	2.0
<b>Attenuation</b> (Reference level from 0dB)					
D.C ~ 380 MHz	dB	30	54	-	
380 ~ 395 MHz	dB	20	32	-	
412 ~ 430 MHz	dB	20	31	-	
430 ~ 2000 MHz	dB	30	37	-	
Temperature Coefficient of Frequency	ppm/°C	-36			

### C. MEASUREMENT CIRCUIT:

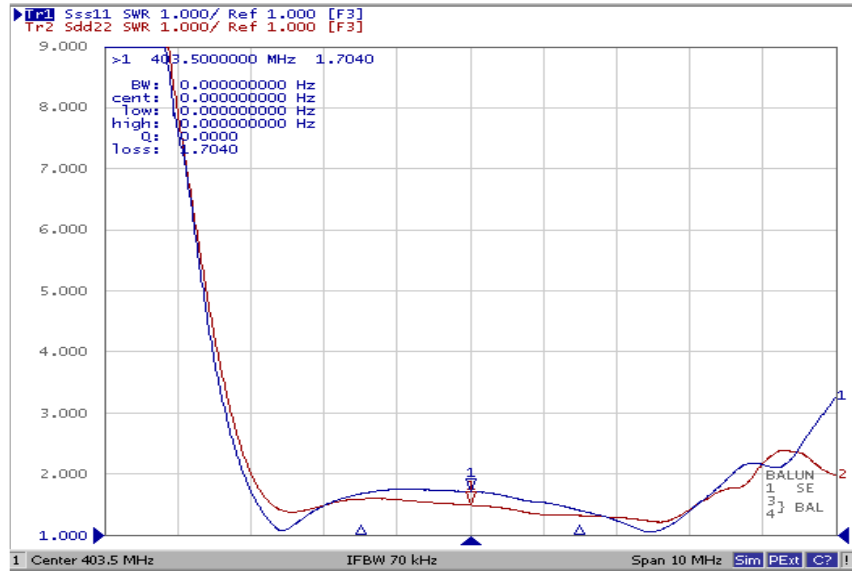


## D. FREQUENCY CHARACTERISTIC:

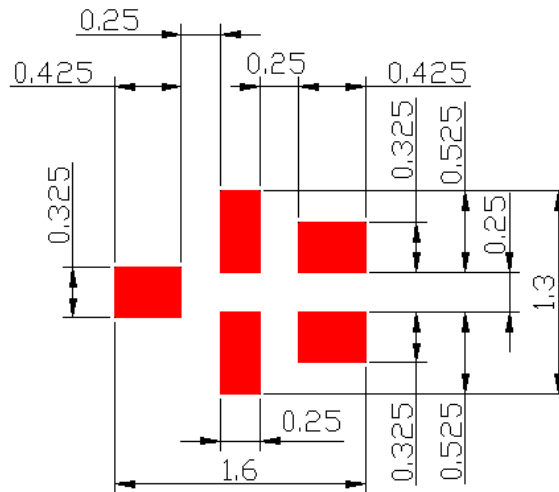


**Reflection Functions:**

**VSWR**

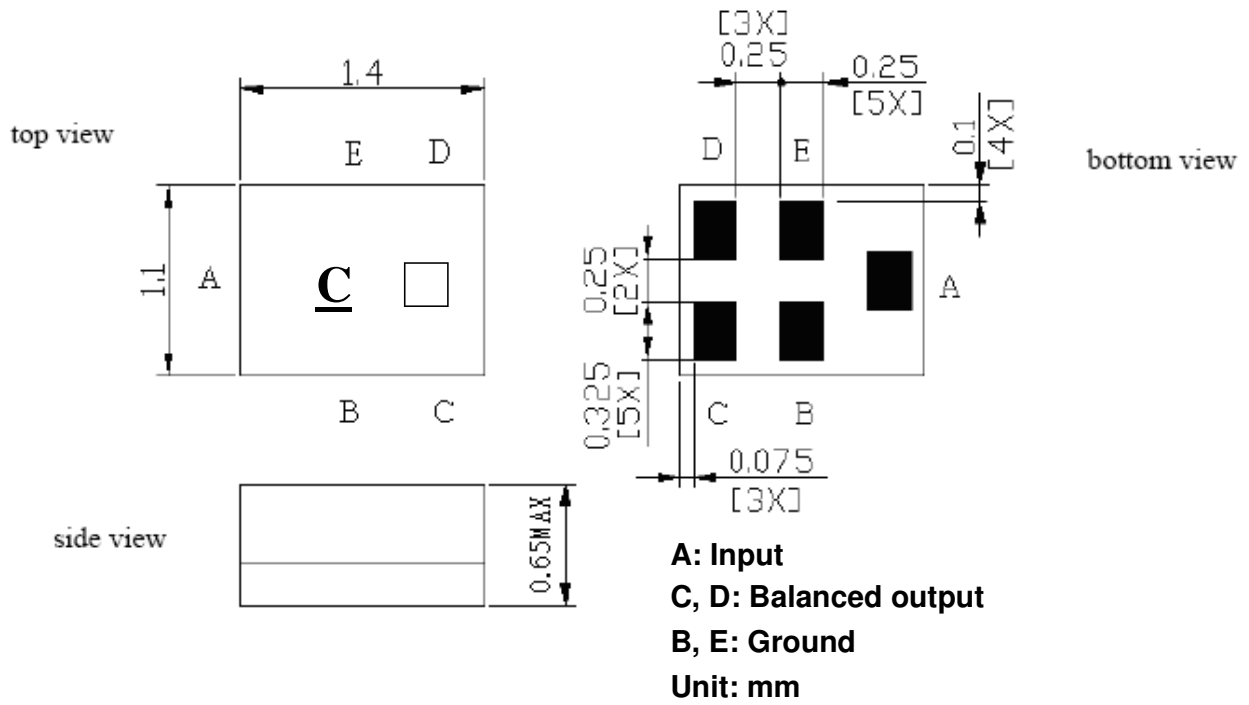


**E. PCB Footprint:**



: Land Pattern  
Unit : mm

**F. OUTLINE DRAWING:**



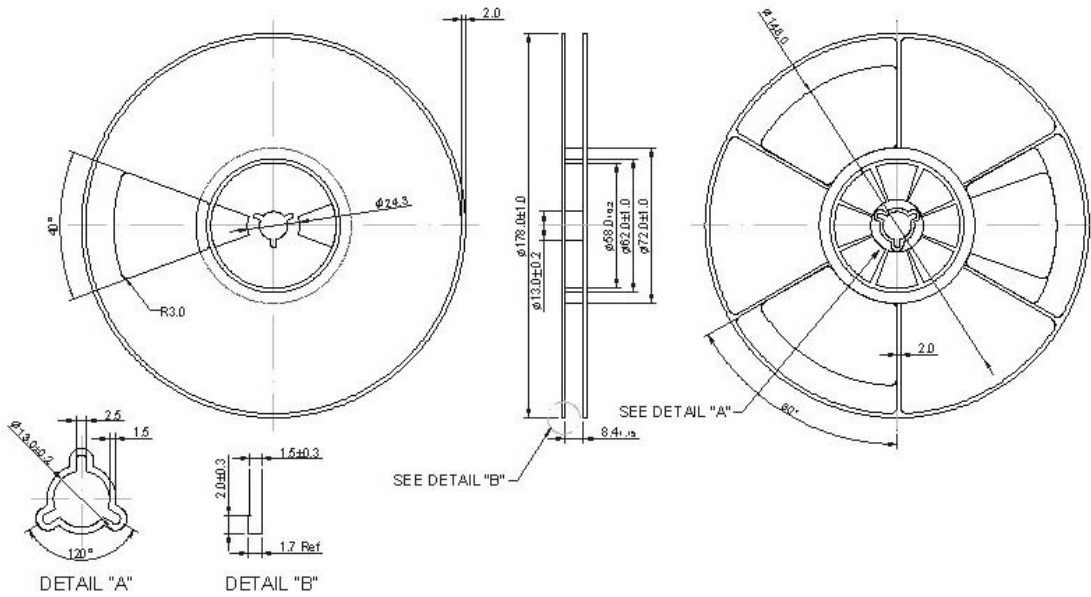
□ : Year/Month Code (Follow the table)

YEAR/Month	1	2	3	4	5	6	7	8	9	10	11	12
2013	A	B	C	D	E	F	G	H	J	K	L	M
2014	N	P	Q	R	S	T	U	V	W	X	Y	Z
2015	a	b	c	d	e	f	g	h	j	k	l	m
2016	n	p	q	r	s	t	u	v	w	x	y	z
2017	<u>A</u>	<u>B</u>	<u>C</u>	<u>D</u>	<u>E</u>	<u>F</u>	<u>G</u>	<u>H</u>	<u>J</u>	<u>K</u>	<u>L</u>	<u>M</u>
2018	<u>N</u>	<u>P</u>	<u>Q</u>	<u>R</u>	<u>S</u>	<u>T</u>	<u>U</u>	<u>V</u>	<u>W</u>	<u>X</u>	<u>Y</u>	<u>Z</u>
2019	<u>a</u>	<u>b</u>	<u>c</u>	<u>d</u>	<u>e</u>	<u>f</u>	<u>g</u>	<u>h</u>	<u>i</u>	<u>k</u>	<u>l</u>	<u>m</u>
2020	<u>n</u>	<u>p</u>	<u>q</u>	<u>r</u>	<u>s</u>	<u>t</u>	<u>u</u>	<u>v</u>	<u>w</u>	<u>x</u>	<u>y</u>	<u>z</u>

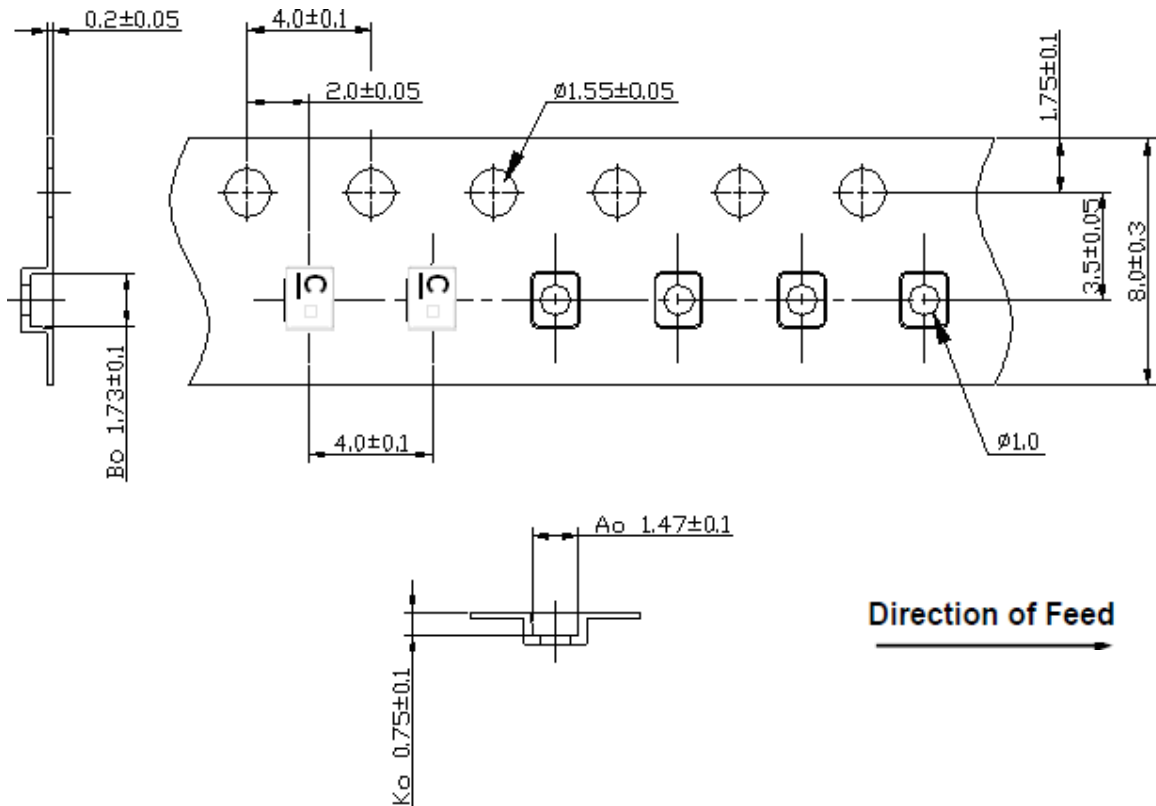
**G. PACKING:** (Ref: WI-75M03)

**1. REEL DIMENSION**

(Please refer to FR-75D10 for packing quantity)



**2. TAPE DIMENSION**



## H. RECOMMENDED TEMPERATURE PROFILE OF REFLOW SOLDERING:

1. Preheating shall be fixed at 150~180°C for 60~90 seconds.
2. Ascending time to preheating temperature 150°C shall be 30 seconds min.
3. Heating shall be fixed at 220°C for 50~80 seconds and at 260°C+0/-5°C peak (20~40sec).
4. Time: 2 times.

